

Film viewing unit with shutters

www.ewem-janus.de

Mammographie X-ray film viewers acc.to DIN 6856

- 4 freely moving shutters for glare-free film reading, infinitely variable adjustment of luminance within the range from 10 to 100%, X-ray film viewer with high frequency converters, very quick ignition of fluorescent lamps, no flickering effect energy saving up to 25%, tiltable and removable front cover for cleaning and service jobs
- metal housing with white powder coating RAL 9002
- daylight tubes appr. 6.500 °K, luminance: 9.000 cd/m²
- excellent uniformity of the luminous density
- Voltage: 230 V, 50 Hz



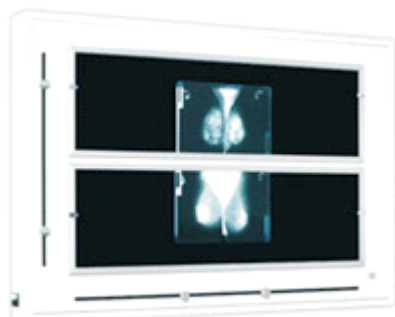
2 viewing areas: 96 x 30 cm
Power consumption: 380 VA
fluorescent tubes: 10 x 36 W
outer dimm.: 1240 x 940 x 120 mm
weight: 57,00 kg
1096302
on request: mobile holder for magnifying glass

additional mobile holder for magnifying glass

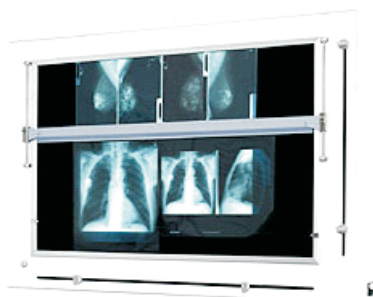


1 viewing area: 96 x 60 cm
with variable central holder
add. mobile holder for magnifying glass
Power consumption: 380 VA
fluorescent tubes: 10 x 36 W
outer dimm.: 1240 x 940 x 120 mm
weight: 59,00 kg
1096601

magnifying glass: Ø 11 cm, x2, x4



2 viewing areas: 108 x 30 cm
Power consumption: 380 VA
fluorescent tubes: 10 x 36 W
outer dimm.: 1400 x 940 x 120 mm
weight: 63,00 kg
1010830
on request: mobile holder for magnifying glass



1 viewing area: 108 x 60 cm
with variable central holder
add. mobile holder for magnifying glass
Power consumption: 380 VA
fluorescent tubes: 10 x 36 W
outer dimm.: 1400 x 940 x 120 mm
weight: 65,00 kg
1010860