

Darkroom Safelights

Darkroom Safelights

are available as wall or ceiling model for indirect lighting of the working place.
All models are suitable for blue and green sensitive, orthochromatic films.
With electronic ballast for quick start, flickerfree light, long lifetime of the tube and energy saving.
The lamp change can be carried out very simply by a house technician.
All units in compliance IEC 601-1

Wall mounted lamp DWS

The Darkroom safelight type DWS is equipped with a swivelling filter.
By the variable light strip the light can be adapted to different room sizes.



180700
space required w x d x h: 39 x 10 x 10 cm
fluorescent tubes: 1 x 8 W
net weight: 0,90 kg
current consumption: 0,06 A
power supply: 220 - 240 V AC 50/60 Hz

Dark room safelights type LED

The built-in LED's emit a darkroom light in the range of 629 nm and has an output of two Watts.
This convenient spectrum enables the use for blue as well as green sensitive, orthochromatic films.
The additional red tube filter secures further more the electric security and the output of light.

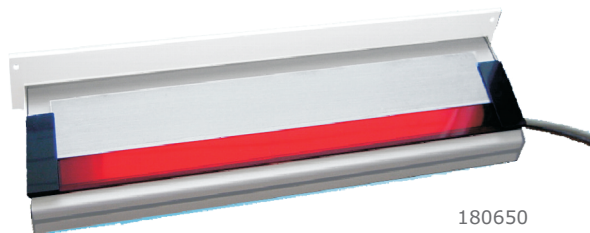
No lamp replacement -> lifetime: at 8 hours of usage / day, approx. 13 years

Wall mounted lamp DWL type LED

The wall mounted safelight DWL with LED was equipped for high sensitive filmmaterial
with an integrated adjustable screen.
Thereby the brightness can be adapted to diverse room sizes.

TECHNICAL DATA:

Power supply: 110-240 V, 50/60 Hz
Current consumption: 0.06 A
Output LED's: 8 W
Fuses: 2 x 1 A F
Space required: 50 x 12 x 12 cm
Weight: 2,00 kg
Duration of life: approx. 50.000 h



180650

Wall mounted lamp DWS type LED



180750

TECHNICAL DATA:

Power supply: 110-240 V, 50/60 Hz
Current consumption: 0.06 A
Output LED's: 8 W
Fuses: 2 x 1 A F
Space required: 39 x 10 x 10 cm
Weight: 2,00 kg
Duration of life: approx. 50.000 h

Darkroom Safelights

Spare tubes for former models



3-sided black / 1 red
180507

complete with filter
For Typ DW-3/1
Net weight:0,40 kg



4-sided red
180508

complete with filter
For Typ: DW, DW/HS und DD
Net weight:0,40 kg

Changing lamps

exchange system in the rotating: Against sending the defective fluorescent lamp is a new lamp fluorescent lamp is supplied with filter.



3-sided black / 1 red
180510

For Typ DW-3/1
Net weight:0,40 kg



4-sided red
180511

For Typ: DW, DW/HS und DD
Net weight:0,40 kg